



LEARN over LUNCH

Reserve Your Spot in this Webinar!

CHIROPRACTIC OCCUPATIONAL HEALTH NEWS



Chiropractic for Employee Wellness and Workplace Safety

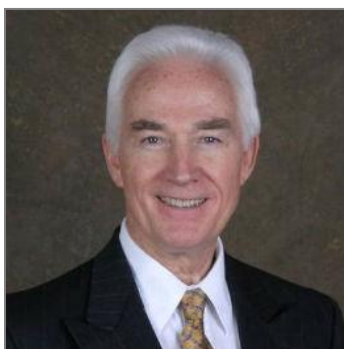
MAY/JUNE | 2017



“LOW BACK PAIN – THE ALBATROSS OF INDUSTRY- THE NEMESIS OF MEDICINE”

LEARN over LUNCH WEBINAR

**JOSEPH J. SWEERE, DC, DABCO, DACBOH, FICC
SCOTT BAUTCH, DC, DACBOH; PRESIDENT
JULY 11 (TUES) @ 12:15 – 1:30**



Joseph J. Sweere, DC,
DABCO, DACBOH, FICC

JOIN US in this webinar to hear this profession’s TOP experts on LBP!

- *Learn why the condition so prevalent continues to puzzle employers!*
- *Understand lifestyle considerations impacting low back pain!*
- *Develop a compelling strategy for assigning a high-risk worker to a high risk work assignment! Employers will thank you for it!*



Scott Bautch, DC, DACBOH

Fee: \$45 if before June 16; \$55 after June 16. Information for access to the webinar will be provided to you at registration. Please call 507-455-1025 (during normal business hours).

PRESIDENT SCOTT BAUTCH

I've recently done three national interviews over the last couple months on the topic of the workplace environment and the need to make it motion-rich for the human experience. Companies and industries are moving from workers as *commodities* to workers as *assets*. Peter Drucker said it a long time ago, that we manage systems - we need to grow people. Simon Sinek recently stated in a video on Millennials that industries and companies need to step to the plate to understand that the work environment needs to grow the human beings they employ. We are not human *doings*, we are human *beings*.

Within the work environment is the need for understanding that controlling pain through drug intervention has been a huge failure; in fact, it continues to be an epidemic of human suffering. In 1995 pain was designated as the fifth vital sign; it led to a focus on pain reduction and away from function improvement. 165,000 people have died since 1999 from opiate-related complications. Four out of five heroin addicts started with opioids. Employers and the public at-large are looking for solutions. It is high time for our profession to step to the plate to reduce the suffering.

EDUCATIONAL OPPORTUNITIES FOR YOU

As President of the American Chiropractic Association Council on Occupational Health (ACACOH) I want to welcome you, and encourage you as you actively engage in this specialty to check out the wonderful educational opportunities available to you within the [Chiropractic Occupational Health and Applied Ergonomics](#) series available (for distance and online learning) through Northwestern Health Sciences University (NWSU). To get started, call the continuing education department at 952-885-5446.

In closing, let me repeat this important message to you: *there has never been a greater need for what we bring to the table for the corporate/industrial community and to the public at large*. In light of this, see the [front cover page](#) for information about an exciting webinar that you will definitely want to put on your calendar. **Please register today for participating in our very first “Learn Over Lunch” Webinar by calling 507-455-1025.**

Sincerely yours on this great journey,

Scott Bautch, DC, DABCOH
President, ACACOH

“LOW BACK PAIN – THE ALBATROSS OF INDUSTRY- THE NEMESIS OF MEDICINE”

LEARN over LUNCH WEBINAR

Presenters:

JOSEPH J. SWEERE, DC, DABCO, DACBOH, FICC
and
SCOTT BAUTCH, DC, DACBOH; PRESIDENT
JULY 11 (TUES) @ 12:15 – 1:30

An important part of this council's mission is the delivery of information to help doctors as yourself learn how to work with employers. Low back pain continues to burden employers with costly problems – workers in pain, related costs, and lowered productivity and morale. Realizing that chiropractic care for treating LBP reduces associated health care costs by 40%, and that chiropractic care reduces the need for surgical care for LBP sufferers, the council invites you to participate in an upcoming (council sponsored) webinar.

RESERVE YOUR SPOT IN THIS WEBINAR for understanding how you can ease the burden on employers' shoulders! Call (507) 455-1025 to register. (Payment due at registration.)

EXECUTIVE BOARD

SCOTT BAUTCH, DC, DACBOH
PRESIDENT

REZA EFTEKHAR DC
VICE PRESIDENT

KAREN WILKINSON, DC
TREASURER

CHAD HENRIKSEN, DC, DACBOH
SECRETARY

ELIZABETH L. AUPPL
ADVISOR TO THE COUNCIL

JOSEPH J. SWEERE, DC, DACBOH
ADVISOR TO THE COUNCIL

This publication is provided as a member benefit. Reprinting of content within this publication may not be done so without the express written permission of the editor; call (507) 455-1025 to inquire. Authors are contributors to this publication; comments by authors may or may not agree with any position statements made by the Council.

PUBLIC HEALTH CORNER for CORPORATE HEALTH & SAFETY

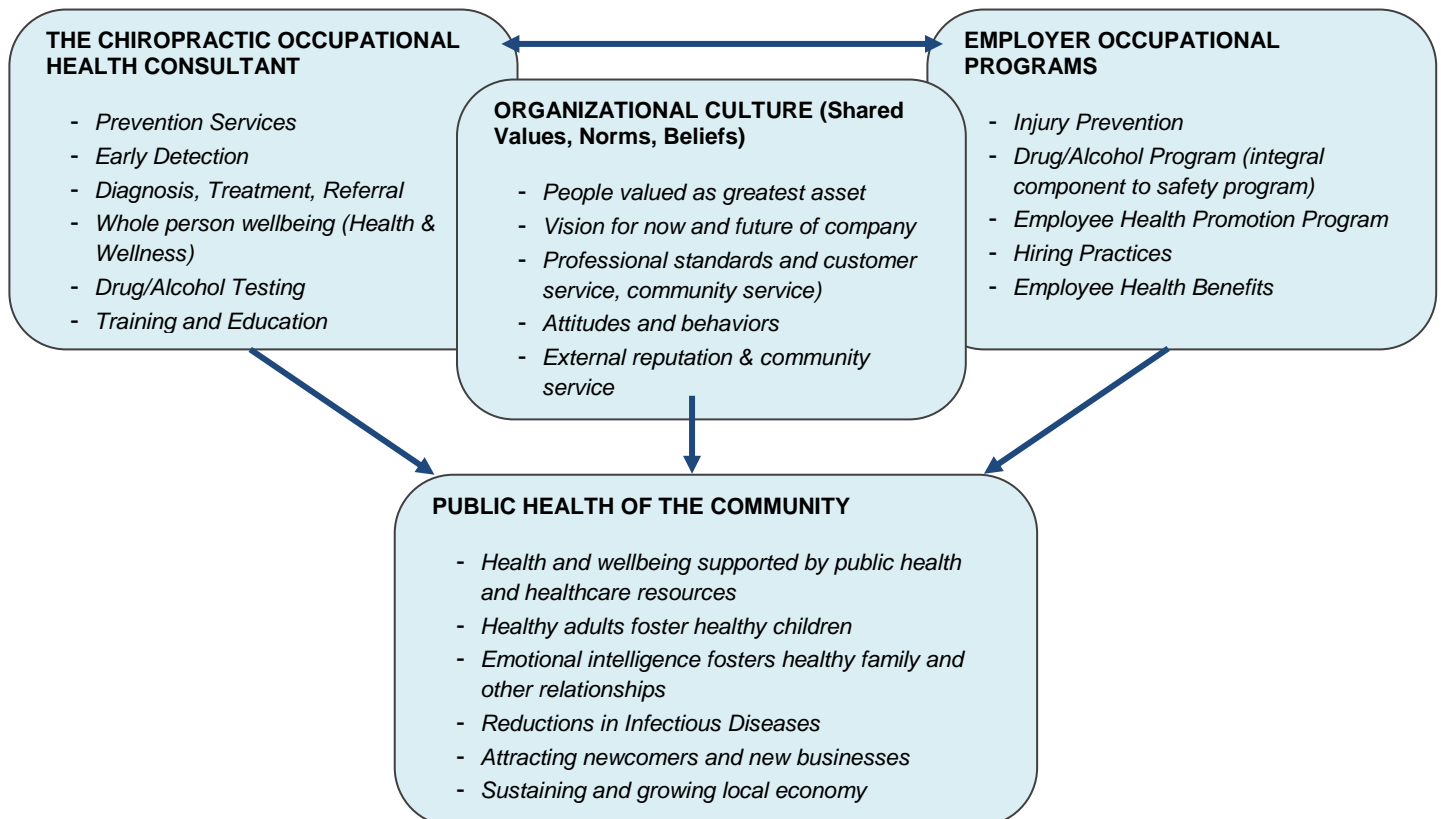
THE POWERFUL CONNECTION FOR IMPROVING LOCAL AND NATIONAL PUBLIC HEALTH

by Elizabeth L. Auppl

Chiropractic is largely concerned with many of the top public health issues in America that employers have long attempted to address (with varying degrees of success) including:

- Musculoskeletal disorders (and resulting injuries and illnesses)
- Alcohol misuse and alcoholism/addiction
- Prescription and illicit drug use, misuse, addiction, and overdose deaths
- Infectious diseases
- Heart disease and stroke
- Eating disorders
- Nutrition and healthy diet
- Chronic diseases
- Acute and chronic pain management
- Mental wellbeing/mental health

Of course the list could go on but that's not what I want you to focus on. Have you ever pondered just how **powerful** the connection is between the *DC consultant*, the *employer*, and a company's *well designed organizational culture* for shaping public health? The broad positive impact of this triad cannot be confined within the workplace. Where healthy employees live, raise families, and interact with others improves public health at the community level. Importantly, if our national state of public health is to improve, it has to begin at the local level with you and me. Whether providing a single service or an array of services that employers need, our value as an outside expert consultant has far reaching impact. My hope is that in your very next interaction with an employer you can demonstrate an expanded vision for improving public health beyond the walls of the company into your own backyard. Let's you and I keep on doing what each of us is doing for the employers we serve because we are making a difference!



AMERICAN CHIROPRACTIC BOARD of OCCUPATIONAL HEALTH (ACBOH) REVISES WRITTEN EXAM FOR DIPLOMATE CANDIDATES

In very recent times, the ACBOH Board of Directors implemented changes to the written examination by making it available to candidates as a proctored and online examination. The written exam may be completed on the campus of Northwestern Health Sciences University or in a remote location as appropriate.

Candidates will have first accomplished published educational course hours requirements as well as having completed and received approval of a field study project or research paper. Achieving such approval of the project or paper is an indication that the candidate met the requirement to demonstrate competency in the field of occupational health and is eligible to sit for the written examination. Following successful completion of the written examination, the candidate is awarded Diplomate status in the American Chiropractic Board of Occupational Health and may use the DACBOH designation.

The written examination question pool has been completely reviewed. After revisions were made by removing questions no longer relevant and adding new questions for new courses added during more recent years, the pool has been expanded. These efforts support the credibility and integrity of the examination.

When a candidate is nearing the finish line or is ready to apply for the examination, it is recommended that he or she contact the ACBOH headquarters by calling (507) 455-1025 to receive coaching concerning applying and readiness.

DOT WEEKEND PROGRAM: T DRUG & ALCOHOL TRAINING and DOT PHYSICALS

Northwestern Health Sciences University is planning for the weekend classroom program this Autumn. While dates are not available quite yet, you can contact either #s below to learn more:

IACOHC @ 507-455-1025 or
NWHSU @ 952-885-5446

Chiropractors across the nation continue to be at the forefront for providing these important services for DOT regulated employers.

STRUCTURAL APPROACH TO CLINICAL CASE MANAGEMENT - EXTREMITIES (DVD)

Clinical Pearls in Extremity Adjusting – A Two-Hour DVD Hands on, Lifetime Learning Experience

Assessment and adjustment techniques by Joseph J. Sweere, DC, DABCO, DACBOH, FICC. Solid, trusted information in the:

- assessment and adjustment technique for the foot and ankle;
- taping the foot and ankle;
- assessing the knee joint;
- assessing the hip joint;
- upper extremities.

Take advantage of Dr. Sweere's 50 plus years of clinical practice and teaching skills as he shares detailed, hands-on presentation of highly effective, specific adjustments of the extremities along with the identification of little known trigger points and demonstrations of related soft tissue rehabilitation. Thoughtful application of these techniques will greatly enhance your clinical outcomes and patient referrals.

\$49 (includes shipping). Prepaid only by check, VISA, MC or Discover.
(Sales tax as applicable will be added.)

Call 507-455-1025 to order.

**“Best Seller”
from the
IACOHC**

There simply is no other comprehensive resource of this type available today to help doctors market chiropractic services for workplace safety, injury prevention, and employee well being.

“A Guide to Marketing Chiropractic & Occupational Health”

Looking for a “Get Started” resource? This is it. *There simply is no other resource like this guide.*

The single most best-seller among the (nonprofit) IACOHC’s resources for doctors, the *Guide to Marketing Chiropractic & Occupational Health Services to Employers* is jam-packed with easy to understand and easy to implement information, insights and tips, and everything you need to know for moving forward in communicating with local employers and with your outreach efforts.

And you will see that reaching out to employers does **not** have to be expensive, just smart.

Whether you have done much or little, or are still thinking about marketing to employers, this guide is for you.

BOTTOM LINE MATTERS

Learn how to make the very most of your marketing dollars and time.

This guide gives you all the information and guidance you need to communicate with local employers so that you can become the company’s chiropractic occupational health consultant.

Tremendous opportunity exists for the great chiropractic profession in service delivery to America’s businesses.

Marketing your services can be simplified; know *what* to do and *how* to do it to impact the companies in your area.

This manual reveals:

- Your value as an outside consultant
- Services to offer employers
- Differentiating from the competition
- Importance of building professional trust
- Market research and analysis
- Marketing DOT services
- Effective methods, tips, techniques
- Conducting needs assessment
- Specifically on-site chiropractic
- What employers need from the occupational health DC
- Maximizing your best marketing resource
- Best Practices/Mistakes to avoid
- Plan your marketing approach
- Worksheets
- Reaching the right person
- That first meeting
- Educating employers
- Positioning as the health/safety expert
- Responding to the “out of the blue” employer phone call
- Grabbing attention
- Think “Solutions”
- Reviewing losses for *root cause*
- And much more (including studies, etc.)
- Many new items added 2016

**Order today by calling
(507) 455-1025.**

\$109 (shipping waived) IACOHC/Council Members

\$129 + \$10 Shipping non-Members

VISA/MC/Discover or by check. (Sales tax as applicable.)

Check payable to: IACOHC

Price subject to change without notice.

ABOUT RESOURCES FOR DOCTORS

Resources featured throughout this publication for doctors of chiropractic are made available through the nonprofit International Academy of Chiropractic Occupational Health Consultants (IACOHC).

The IACOHC sells **only those resources that have a proven track record** of actually helping DCs advance and expand their involvement with employers via chiropractic occupational consulting.

All resources are educational and information in nature. (Sorry, gimmicky or hype products are not supported by the IACOHC. Chiropractic's reputation is always to be preserved.)

Recommendations for purchasing resources: it can be confusing. Rather than 'buy everything', **buy smart.** If you need assistance knowing which resource and/or training option will meet your current needs (and pocketbook) please call the IACOHC at **(507) 455-1025**.

Be sure to check RESOURCES at www.acacoh.com and www.iacohc.com. *When purchasing any single product/resource or certain individual (1:1 with instructor) training sessions priced over \$100, membership to the nonprofit IACOHC is **free for the first year**.* Always inquire.

ACACOH members enjoy the same discounts (as applicable per product) as the IACOHC members do.

507-455-1025

NEW RESOURCE!

“CHIROPRACTIC ONSITE (WORKPLACE) SERVICES – PLANNING GUIDE”

Available through the IACOHC. \$89 or \$79 for members (prepaid; sales tax as applicable).

PLANNING GUIDE FOR CHIROPRACTIC ONSITE (WORKPLACE) SERVICES lends excellent guidance whether you are only pondering the idea of taking your chiropractic services onsite the workplace setting or you have already made the decision to move that direction. In the guide you will find information as:

- Explaining the benefits of onsite chiropractic care to the employer;
- The value you bring as an objective outside consultant;
- Formats for onsite service provision;
- Choosing which services to provide;
- Overview of what your proposal should entail;
- Structuring fees for service;
- The value of chiropractic care and occupational services (based on studies);
- And more.

This is a brand new resource by the IACOHC created in response to the many requests by DCs who “just need more information” to know how to move forward. Anticipated to be a best seller resource to the chiropractic occupational health specialty. Watch for it (but you can pre-order now).

507-455-1025

RESPONDING TO EMPLOYER QUESTIONS ABOUT DOT DRUG & ALCOHOL TESTING AND COMPLIANCE?

You are not alone in having employers you serve asking you for answers to their questions that pertain to how they should be operating their DOT drug/alcohol testing program. Employer representatives charged with making the company's DOT program compliant and successful have great need for a single resource within arm's reach to guide their every step. While you are providing a much needed and important service to employers when you test their employees, your knowledge of the employer's side of compliance is quite limited. Answering their questions is easier done by obtaining the [The DER's Handbook for D.O.T. Drug & Alcohol Testing](#) available on **Amazon** or **by calling the IACOHC at 507-455-1025**. Buy it for them or refer the employer/rep to purchase a guide that literally has answers to every question the employer could have. ***It will save you time, and give the employer answers right now.***

Members (IACOHC and ACACOH): **\$79.00**
(free shipping)

Non-members: **\$79.00 + \$10** Shipping.
Sales tax as applicable will be added. Prepaid only.
VISA/MC, Check (payable to IACOHC)

CALL TO ORDER
(507) 455-1025

BEYOND OSHA COMPLIANCE WORKPLACE SAFETY CHECKLIST AND TOOLS ASSISTS AND IN FACT, EQUIPS AND EMPOWERS THE SAFETY EXPERT AND TEAM TO CONDUCT THE WALKTHROUGH FOR SAFETY SAKE, AND NOT LIMITED TO BASIC OSHA COMPLIANCE. THE TOTAL FOCUS IS OVER-ALL SAFETY FOR PEOPLE IN THE WORKPLACE.

“BEYOND OSHA COMPLIANCE WORKPLACE SAFETY WALKTHROUGH CHECKLIST & TOOLS”

For use by the chiropractic occupational consultant

Chiropractic oriented edition.

Now you have an excellent resource to assist your efforts in conducting a safety walkthrough for the employer.

A well-balanced audit as this guide directs the expert consultant to accomplish, takes a full look at safety yet with the flexibility to tailor the walkthrough for a particular department, plant, or workstation(s) – whatever the organizational or managerial objectives are for conducting a safety audit.

More than just another checklist – this guide assists pre-audit planning and post-audit meeting where the team takes findings of the audit into consideration for improving safety by implementing administrative, engineering, operational, and policy controls and modifications.

Whether you want to be the primary lead in the process, or be the safety expert included in the audit team, you will have everything you need within the pages of this resource.

Your total focus will be on safety for people (including work ergonomics for the individual worker doing the work). Use this resource to identify and rate hazards and risks to physical safety. Now expanded to include tools and information for workplace psychological health (injury prevention).

Included in the guide:

- *Comprehensive audit checklist*
- *Pre-walkthrough meeting tips*
- *Hazards common to working alone or in isolation*
- *Immediate action required (where danger is imminent)*
- *Early detection of musculoskeletal injuries*
- *Mapping the walkthrough*
- *Post-meeting follow-up tips*
- *Why injury prevention programs fail*
- *Placing value on the outcome*
- *Workplace Psychological Health Preservation tools and information*

NEW!

We know that *compliance to governing frameworks* by itself does not ensure a workplace free of risks for injuries or illnesses; hence the value of a walkthrough safety audit at regular intervals.

(507) 455-1025

ONLINE POSTGRADUATE EDUCATIONAL OPPORTUNITIES

Complete federal requirements for qualification to perform Dept. of Transportation (DOT) services. Become that 'one-stop-shop' DOT covered employers need. (No insurance hassles involved.)

(ONLINE) DOT DRUG AND ALCOHOL TESTING: Fulfill federal requirement to **complete training** by viewing video presentation by a qualified instructor. 8 hr. Upon completion of training and proficiency (see below) you will be officially qualified to perform DOT testing services for employers. The testing industry (at-large) is experiencing (consecutive) billion dollar annual growth as the transportation industry boom is in full force and as more workplaces implement testing programs in a time of national economic growth. These are services that DOT covered employers must have. (Beyond DOT market: typically when providing DOT services, the general workforce (non-DOT) business is gained as well.) Providing DOT testing (and non-DOT as well) carries very low expense in setting up, and no need to hassle with insurance – these are cash services. Elizabeth L. Auppl has been a DOT instructor to the profession for 13 years, helping thousands of DCs to become officially qualified to provide testing services. **Call Northwestern Health Sciences University at 952-885-5446. Or visit <https://www.nwhealth.edu/conted/distlear/catalog/dot01.html> to register online. Fee for training course published on NWHSU website. Who should attend: DCs, CAs, and other health care personnel, and clinical staff.** You may also call Elizabeth L. Auppl, course Instructor, with questions you might have (507) 455-1025. Method: instructional and interactive learning, demonstration, and one-on-one coaching and monitoring throughout the demonstration of proficiency processes. **Proficiency:** with the online option completing the federal requirement to demonstrate proficiency is available as a separate service of the course instructor, providing required real-time, face-to-face interaction between participant and instructor by use of free online video service. Fee for proficiency process and supplies is \$85, (by appointment only, 90 mins of uninterrupted time.) Course Instructor's #1 goal is your total success based on your knowledge, preparation, and efficiency in proficiency; 'helps' and guidance throughout the process are made available to you. You may not perform DOT testing services until you have fulfilled both training *and* proficiency (federal) requirements. Available all states. *Individual live training (including proficiency) also available by contacting course instructor directly (sorry, no CEs for individual live session).*

(ONLINE) DOT PHYSICAL EXAMINATIONS: complete federal requirement for training. Following completion of instructional course, you will be eligible to schedule and complete the federal test at an approved testing facility available within very comfortable driving distance to you (typically less than 35 miles). NWHSU is an approved training organization; a training organization may not also be a testing organization. Become recognized by the National Registry of Certified Medical Examiners for performing DOT physicals for commercial motor vehicle operators. DOT physicals are evaluations to determine driver fitness in accordance to federal medical standards for safely operating a CMV. This course meets (and exceeds) federal requirements of 8 basic core topic areas, and is always up to date. Completing this course will qualify you for scheduling your session for completing the federal test at a testing site within driving radius of your location. (An approved training organization may not also be a testing facility. Cost of the federal test is approx. \$80). Instructors: Elizabeth L. Auppl and Brian Tasky, DC. Course open to DCs, MDs, APNs, DOs, and PAs. **To register, call Northwestern Health Sciences University at 952-885-5446. Or visit <https://www.nwhealth.edu/conted/distlear/catalog/dot02a.html> for registering online.** Method: video instructional and view interactive discussion. This course not available at this time for NY DCs.

(ONLINE) ON-SITE CHIROPRACTIC EMPLOYEE HEALTH & SAFETY: Total 30 hours certificate program. Audience: DCs. Register by calling (952) 885-5446. Course details:

SESSION # 1 of 3, Hours: 10.0. Instructor: Joseph Sweere, DC, DABCO, DABCOH, FICC

Inappropriate workplace planning and design results in significant human suffering and economic losses. The vast majority of workplace ergonomic disorders involve the neuromusculoskeletal system. Learn the time-honored, core principles of workplace ergonomics along with real-world case studies and field applications to arrive at increased workplace safety, worker comfort and morale, increased efficiency and greater productivity.

SESSION # 2 of 3, Hours: 10.0. Instructors: Elizabeth L. Auppl and Chad Henriksen, DC, DACBOH

A growing trend in the provision of corporate on-site health and wellness services currently prevails throughout American businesses. Combining over 40 years of occupational health experience and training, Elizabeth Auppl's and Dr. Henriksen's presentation will provide participants with a clear understanding of the significant advantage doctors of chiropractic have in the provision of such services and the competencies expected of them. This session will outline in detail the various phases of successful corporate consulting and the exceptional outcomes that can be accomplished by appropriately trained providers.

SESSION # 3 of 3, Hours: 10.0. Instructors: Joseph J. Sweere DC, DACBOH, and Chad Henriksen, DC, DACBOH

Clinicians who provide occupational health services must be cognizant of the wide variety of local, state and federal guidelines that regulate employers and the consultants they engage. This session will provide on-site chiropractic care providers with a broad understanding of each of the governmental agencies and the purposes they serve. These include workplace health and safety; workers' compensation; the Americans with Disabilities Act; the Equal Employment Opportunities Commission and worker selection/hiring practices. Case studies and examples are provided so that participants will have the confidence and competence to work effectively with employers and their employees in accomplishing their shared goals. (All courses listed on this page may be applied toward the Diplomate Occupational Health/Safety Program.)

PERFORM PRE-PLACEMENT PHYSICALS

Employers need assurance that applicants are suited for the job. Performing pre-placement physicals is an excellent service you can offer and deliver. Learn from the best of the best as Dr. Sweere lends his expertise to guide you in the process of conducting workplace physicals.

Prepared for Doctors of Chiropractic

PERFORMANCE OF (POST-JOB-OFFER) WORKPLACE PRE-PLACEMENT PHYSICAL EXAMINATIONS

Joseph Sweere, DC, DACBOH, has compiled and authored this fully illustrated manual, providing a step-by-step method with numerical scoring system involved in the performance of the Biomechanical Stress Index (BSI) evaluation used in the pre-placement (post job offer) chiropractic industrial examination.

This copyrighted manual includes 50 predisposing factors related to spinal instability observed among 560 young adults. This is *the guide you need* for performing workplace physical screenings. Includes one set of the *Standardized BSI Exam and Report Forms*.

Watch Dr. Sweere demonstrate and guide you in the pre-placement exam for both a female and a male subject.

Upon purchasing the package you will receive supplemental information to help guide your conversation with employers who purchase this service for job applicants and employees. *(No extra charge for this supplemental information. Be ready to provide your email address at the time of purchase for receiving this important info.)*

Total package includes the following items:

PREDISPOSING FACTORS TO LOWER SPINAL INSTABILITY (MANUAL)

BICS: THE CHIROPRACTIC INDUSTRIAL EXAMINATION (VIDEO on DVD)

EXAMINATION & REPORT FORM SET INCLUDES:

- Authorization to Release Information (form);
- General Health History Questionnaire (form);
- History of Neuromusculoskeletal Disorders & Injuries (form);
- The Chiropractic Industrial Exam (form);
- The Biomechanical Stress Index Evaluation (form);
- Pre-placement Evaluation (form);
- The Summary of Findings (form).

Supplemental Info by email following purchase.

Prepayment only by check, VISA or MasterCard.

Payable to: IACOHC

\$150 + \$10 Shipping.

Any applicable sales tax will be added at the time of shipment.

**TO ORDER CALL
(507) 455-1025**

CHIROPRACTIC OCCUPATIONAL HEALTH AND APPLIED ERGONOMICS (DIPLOMATE) PROGRAM

Why choose Occupational Health? Today's health care marketplace is rapidly changing and it's the perfect time to position yourself to offer your unique services directly to business and corporate clients in your community. In this program you will learn the fundamentals involved in the specialty of occupational health, applied ergonomics and industrial consulting. The training will assist and equip you for working with business owners, human resource managers, engineers, occupational nurses, and other health care professionals to improve the work environment. Chiropractic doctors can offer a broad array of service to industry.

Learning Format

The bulk of the program is completed via DVD learning. Start with the first DVDs or pick a topic of interest to you right now to get started. There is some flexibility as to the sequence of DVDs to be purchased, and you need not necessarily commit to completing the entire program up front (but there are discounts for doing so). You might start with DVDs/topics that will help you get your foot in industry right now.

Phase One (DVD #1 - 10) a comprehensive introduction to the skills required and how chiropractic services can be positioned within the field. For example, the DOT Drug Testing and Alcohol Screening Certification, DOT Physical exam session can enable you to immediately add new services to your practice. During Phase 1 (ten 12-hour DVDs) an experienced team of expert instructors will introduce you to the concepts and practical considerations in becoming a chiropractic occupational health consultant. You will learn how to consult with business and industry clients regarding occupational safety, evaluation and treatment of injured workers, developing preventive interventions and providing employee education. DVD's are currently available.

Phase Two (DVD #12-20*) and one live session consists of eight 12-hour DVD sessions and one live field project reporting session totaling up to 120 CE hours. You will learn about stress management, accident and injury prevention strategies, and how to treat condition-specific injuries such as CTD, upper extremity and soft tissues syndromes and more. Learn important new ways to rehabilitate injured workers so they can return to work safely, often early on so they are working while recovering. Learn and understand progressive new strategies for workplace wellness, and how to identify and respond to employers' true needs.

Phase Three (DVD #21-22) and one live session consists of two 12-hour DVDs and one live session where you present your field study final report. The most exciting part of Phase 3 is your work with clients as a consultant. During this time you will complete and document a consulting project with one or more businesses, or develop an independent, original research project suitable for publication. You will work with a mentor, whom you will meet during the live session of phase two, to assist you in accomplishing this phase of the program. You must successfully complete Phase 1 and at least 60 hours of Phase 2 in order to begin Phase 3.

State Relicensure Credit

Continuing education credit is available in most states, contact your respective licensing board or the Continuing Education department at Northwestern Health Sciences University, 952-885-5446 for more information. Visit <http://www.nwhealth.edu/conted/seminars/OHdvd.html#topics>. Visa/MasterCard/Discover and checks accepted. Student discounts apply, inquire.

[TOPICS & PRESENTERS HERE](#)

[PHASE 1 ORDER FORM HERE](#)

[TUITION RATES HERE](#)

(952) 885-5446
CONTINUING EDUCATION

PLEASE SUPPORT THE COUNCIL ON OCCUPATIONAL HEALTH



JOIN TODAY!

MEMBERSHIP IS ANNUAL

PLEASE PRINT LEGIBLY

Name: _____ Degrees: _____

Email address: * _____

* Newsletters, news, ebulletins, announcements are sent to members via email.

Phone: (OFC) _____ Fax _____

Mailing address: _____

CITY, STATE, ZIP: _____

Chiropractic College: _____ Grad. Yr.: _____

Current Member of ACA: YES NO (circle one)

Member of other ACA Council: _____

I hereby apply for _____ membership (please check box at right column). I understand that is it current, paid membership to the Council that retains membership benefits for me.

CERTIFICATE and DIPLOMATE MEMBERS: ____ I have enclosed evidence of postgraduate (Diplomate) education completed.

FOR MEMBERS:

- Quarterly Newsletter, Occupational Health Briefs
- Media Release announcing membership
- E-bulletins, special announcements
- Welcome to participate in Council teleconferences (quarterly)
- Welcome to participate in various council business conference calls
- Welcome to attend annual business meeting of the council
- Voting privileges are extended to Certificate and Diplomate members

Additional Membership Benefit

ACACOH Members may enjoy the same discounts on [RESOURCES](#) available to doctors marketing to or working with local businesses. See IACOHC website at www.DC-OccHealth-Org.com.

Signature: _____ date: _____

Make check payable/mail to: **ACACOH**
ATTN: Elizabeth L. Auppl
930 Crestview LN
Owatonna MN 55060

SELECT CATEGORY HERE: Check one box

ASSOCIATE MEMBER: DC with special interest or involvement (at any level) in occupational health/safety, working to advance the profession in industry.
\$60 + \$25 processing fee (one time fee)

CERTIFICATE MEMBER: DC has successfully completed 120 hours of the Diplomate chiropractic occupational health & applied ergonomics education.
\$80 + \$25 processing fee (one time fee)

DIPLOMATE MEMBER: DC has completed the Diplomate chiropractic occupational health & applied ergonomics education and examination processes. (360 hrs.)
\$80 + \$25 processing fee (one time fee).

NEW DOCTOR MEMBER: new doctor, first year practice only.
\$20 + \$25 processing fee (one time fee)

STUDENT MEMBER: Student of chiropractic enrolled in any chiropractic college, not yet graduated.
Free membership while enrolled and until graduation.

RETIRED MEMBER: Retired DC supporting the chiropractic occupational health specialty and now retired from practice.
\$20 + \$25 processing fee (one time fee)

(507) 455-1025

THANK YOU FOR YOUR SUPPORT!